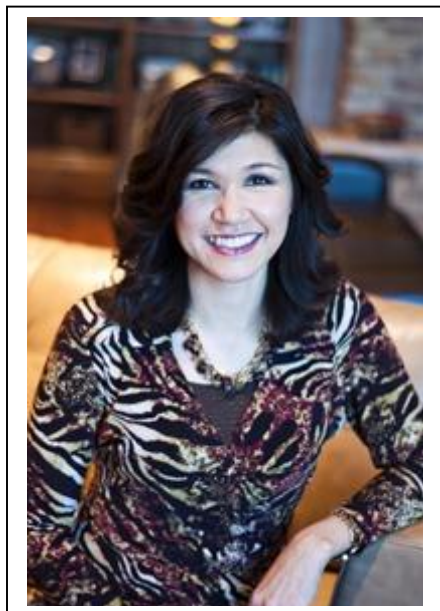


## EVANGEL UNIVERSITY GRADUATE COUNSELING FACULTY

### Core Faculty



*Christine Arnzen, Ph.D., LPC*, is a 1985 graduate of Evangel University's Psychology Program. She received her master's degree for Forest Institute of Professional Psychology in 1988 and received her PhD in Counselor Education and Supervision from Regent University in 2016. After working at a local community mental health center, she joined Evangel University's Counseling Center Staff in 1989. She directed the Evangel University Counseling Center from 1998 to 2003. In 2003, she joined the clinical staff as a marital intensive therapist at the Focus Marriage Institute (formerly the National Institute of Marriage) and assumed the position of Director of Clinical Services from 2005 to 2012. She returned to Evangel as a full-time faculty member in 2012. Dr. Arnzen was appointed as the Program Coordinator of the Counseling Program in 2013. She holds

current memberships in the American Counseling Association, Association for Counselor Education and Supervision and the Missouri Mental Health Counselors Association. Her areas of interest include supervision and couple counseling.



*Grant Jones, Ph.D., LP*, is a professor and psychologist at Evangel University. He has been teaching in the Behavioral Sciences department at Evangel since 1988 and became a licensed psychologist in 1991. He received his BS in psychology and math from Evangel University in 1977 upon which he taught math and French in Verona high school for three years. While completing his MS in Guidance and Counseling (finished in 1984), he worked at Evangel University as a counselor in the Counseling Center and a French teacher in the Humanities department. In 1984 he moved to Columbia, MO to work on his PhD in Counseling Psychology. In 1987 he moved to Topeka KS and did a year-long internship at the VA Hospital. In 1989 he graduated from the University of Columbia, MO with his doctorate.

In 1988, he returned to full-time teaching in the Behavioral Sciences department at Evangel University. He serves as full time graduate faculty in Evangel's Counseling Program. He also provides counseling services at Gateway Counseling Center.

His present academic passion is providing students international counseling practicum and internship opportunities in Kenya. He is conducting research on the effectiveness of his trauma model with Kenyans and the growth in multi-cultural awareness and cultural humility in counseling students. He is a member of the Missouri Mental Health Counseling Association, American Counseling Association, Association for Counselor Education and Supervision, and a member of the Christian Association of Psychological Studies where he served a three-year term as a board member.



*Melody Palm, Psy.D., LP*, holds a Bachelors of Art Degree in Multiple Subjects, a Master's Degree in Counseling and a Doctorate in Psychology. Dr. Palm served as the Director of the Counseling Program at the Assemblies of God Theological Seminary (AGTS) from 2004-2014. Upon the consolidation of AGTS and Evangel, she became full-time faculty in 2015 in Evangel's Counseling Program. She has been teaching graduate counseling classes since 1997. She is actively involved in clinical practice, supervision, and international teaching. Dr. Palm is the founder and director of Still Waters Counseling Center in Springfield, Missouri. She is a licensed clinical psychologist, a registered psychological health service provider, and an approved expert witness for the courts.

Dr. Palm is member of the American Counseling Association, Association for Counselor Education and Supervision, and Association for Spiritual, Ethical, and Religious Values in Counseling. She is a board member for Project Rescue Foundation and speaks internationally on the subjects on sexual abuse, human trafficking, and gender identity issues. She is a published author of numerous articles and book chapters. Her areas of interest in counseling development include integration of faith and praxis, trauma informed treatment, and supervision. Dr. Palm was a past Nominee for Ozarks Women of Distinction Annual Community Leadership Award.



**Huba Ann Ray, Ed.D., LPC**, graduated from Missouri State University in 1974 with a bachelor's degree in Education. She earned her master's in Guidance and Counseling from Missouri State in 1979 and in 2003, she earned her doctorate in Educational Leadership with an emphasis in Administration from Saint Louis University. Ray came to Evangel as an adjunct professor in 2004 and in 2008, became a full time associate professor. Before retiring from the public school systems, her experiences as a teacher, school psychological examiner, and school counselor spanned thirty-three years working with all grade levels K-12. Dr. Ray is a licensed professional counselor (LPC) and a nationally certified counselor (NCC). She is a member of Southwest Missouri School Association (SMSCA), Missouri School Counseling Association (MSCA), American School

Counseling Association (ASCA), and Missouri Association of School Psychologists (MASP). Currently, she serves as SMSCA Post-Secondary Vice President, MASP Southwest Regional Representative, DESE State Advisory Council for Counselor Educators, and DESE State Counselor Advisory Committee. Ray's focus is on educating and training future school counselors, school psychological examiners, and licensed professional counselors.

## **Non-core Faculty**



**Donna Washburn, Ph.D., LCSW**, is a 1998 graduate of Evangel University's Social Work program. She went on to receive her master's degree in Social Work from Missouri State University and her PhD in Counselor Education and Supervision from Regent University in 2015. She began teaching upper level social work courses at Evangel in 2000. Washburn was named chair of Evangel's Behavioral and Social Sciences Department in the summer of 2009. Prior to her role of chair, Dr. Washburn was the field coordinator of Evangel's Social Work program. Her professional experience includes working with the adolescent population in areas such as school social work and as a therapist for teens in residential treatment, providing clinical supervision and consultation for social workers and counselors. Her areas of interest and past research include issues of abuse

and neglect with children, negative behavioral functioning of adolescents, clinical supervision and social advocacy in the mental health field. Dr. Washburn continues to teach courses in both the undergraduate social work, human services, and graduate counseling programs.





Jean Orr, Psy.D., LP, is a licensed Psychologist in the state of Missouri. Dr. Orr obtained her Bachelor's in Arts degree from Evangel University in 1986, and went on to get her Master's and Doctorate degree from Forest Institute. Dr. Orr is a member of the Christian Association for Psychological Studies.

Dr. Jean Orr teaches several classes at Evangel University. Dr. Orr also provides outpatient therapy and testing at Burrell Behavioral Health in Springfield, MO.

Dr. Orr and her husband have five children (ages 5 to 18 years), and her favorite memory as a student is when she met her husband in a Psychology of Religion course. Her favorite things about work are the students and colleagues she interacts with every day.



Jeffery Fulks Ph.D., is a senior veteran of Evangel University's graduate programs having been on the ground floor in developing several of them. Throughout his time at the University he has taught in a variety of programs and disciplines, from education to sociology. His first responsibilities at the university were with the social work program. At present, he teaches undergraduate courses for the Behavioral & Social Sciences department, generally Statistics. He teaches research courses in the Counseling program. He also is the coordinator of the Organizational Leadership and Behavioral Health programs in the College of Adult & Graduate Studies and teaches courses in these. He likes to think of himself as an academic chameleon, due to varied academic experiences and degrees in Mathematics,

Psychology, and Human Services Administration, Planning, & Policy. His research has focused on organizational evaluation and consulting on the research projects of many. He is the chair of the university Research Review Board and serves on a variety of university and community committees. He is an ordained minister with the Assemblies of God and a member of the International Leadership Association.



**Brian Upton, Ph.D.**, has been the Director of Counseling Services at Evangel University for the past 14 years. He is a Licensed Professional Counselor with a PhD in Counselor Education and Supervision. Dr. Upton spent the first six years of his professional career working with adolescents in an acute psychiatric setting and has focused on marriage and pre-marital counseling in his private practice for nearly 20 years. In addition to managing the Counseling Services Department at Evangel University, Dr. Upton has taught in an adjunct capacity for the past 14 years, teaching a myriad of business, counseling, and psychology courses including several graduate level clinical mental health courses. Dr. Upton has been a guest lecturer at numerous churches and universities as well as having conducted marriage, pre-marital and parenting workshops and

conferences both in the United States and internationally. Dr. Upton has been happily married for nearly 30 years to his wife, Stephanie, and has four children.



**Neva Atteberry, M.S., LPC, NCC.** My God-given talent is that of a peacemaker, so counseling is natural for me. With a strong work ethic, an outgoing personality, and much enthusiasm I love the fields of education and counseling. With 42 years of experience as an educator in various capacities, I have served as a school counselor and counselor educator with twenty-four years of experience in the field of counseling. I have been privileged to serve as a counselor educator at Evangel University since 2007, teaching graduate courses for the Counseling Department. Prior to teaching at Evangel, I taught graduate courses at Missouri State University in the Counseling Department for thirteen years. I became a Licensed Professional Counselor

in 2000, and began a sole-proprietor counseling service called Professional Counseling Services of Springfield, LLC in 2012. In the public school arena, I served as a school counselor at Central High School (CHS), Springfield, MO. During my years at Central High, accomplishments/professional privileges included: ESOL Counselor at Central at Central High (due to Spanish-speaking ability); premier planner of the Freshman Leadership Academy at Central High School; school counselor responsible for the CHS duties of building the Middle Years Scholars Program from its inception; contributor to the planning and initiation of the Students Together Achieving Results (STAR) program at Central High for at-risk 9th graders; counselor responsible for senior class coordination; Night of Honors chairperson; Cox College Advisory Board; and numerous committee assignments while carrying a substantial student

case load. Professional memberships include American School Counselor Association (ASCA), Missouri School Counseling Association (MSCA), Southwest Missouri School Counseling Association (SMSCA), and the National Education Association (NEA). In my choice time when I am not teaching, I love being with family. My husband and I enjoy camping, fishing, and time with our five children (and their spouses) and our nine grandchildren. We see each day as a special gift from our heavenly father. Included in our family is one very spoiled Chihuahua. I also love to quilt, sew, and bake.